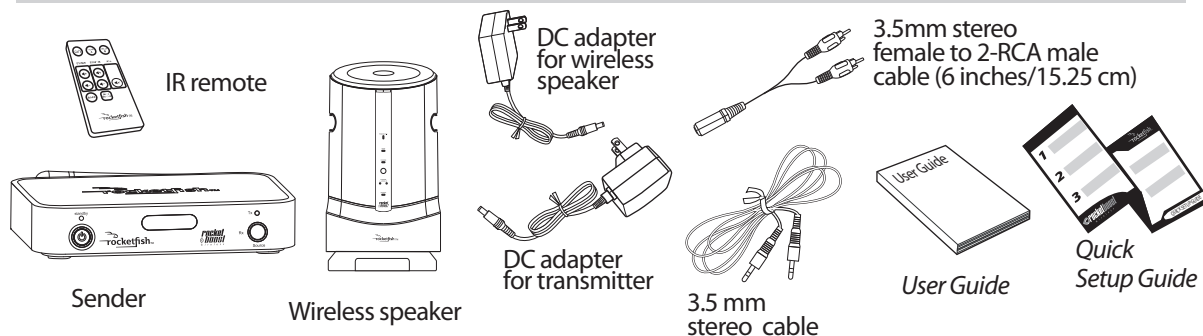


RF-RBWSO2 Wireless Outdoor Speaker

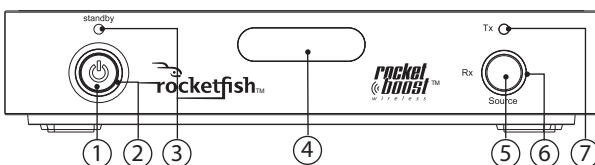


Package contents



Front controls

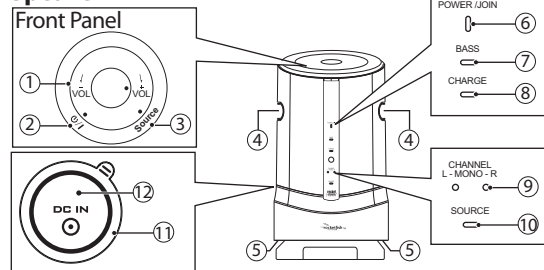
Transmitter



Front Panel

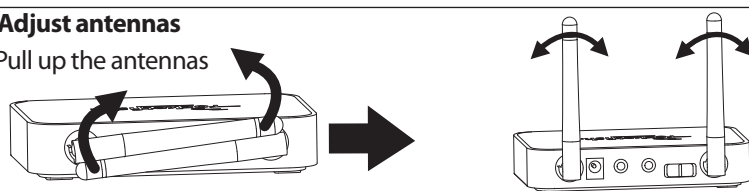
#	Feature
1	Power/Join button
2	Power/Join indicator (Blue/Green Light)
3	Standby indicator (Red Light)
4	IR sensor window
5	Source button
6	Receiver-mode indicator (Blue Light)
7	Sender-mode indicator (Blue Light)

Speaker



Adjust antennas

Pull up the antennas

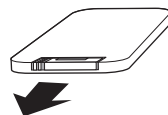


For best results, adjust the antennas to vertical. In some instances, you may improve range by rotating both antennas 45 degrees to create a 90° angle similar to a wide "V".

Preparing the remote control

To activate the battery:

Remove the tab from the bottom of the remote control to enable the battery.



Please read before setting up your system.

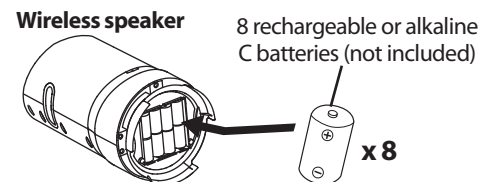
Every Rocketboost network must contain at least one hub device, which directs network data traffic and helps devices join the network. The network can have only one hub, which you can enable using the Hub switch on the back of all Rocketboost transmitters. See your *User Guide* for instructions on "joining" devices to the network. If this is your first Rocketboost product you should make this unit the hub, if you already have Rocketboost products, you should disable the hub mode on this device.

IMPORTANT: Hub units must always have power for your network to operate. The device may be placed in standby, but the unit must remain plugged into the wall to operate your network.

1 Getting Started

Load batteries in wireless speaker (Installing batteries is optional)

- Unscrew the bottom cover (3 screws).
- Insert eight alkaline or rechargeable NiMH batteries matching +/- as indicated. This product will only recharge NiMH batteries. Do not attempt to charge any other batteries in this product. **Note:** Your wireless speaker can operate on batteries or with the DC to AC adapter (provided). The unit will charge and play simultaneously.
- Replace the cover and fasten the three screws.

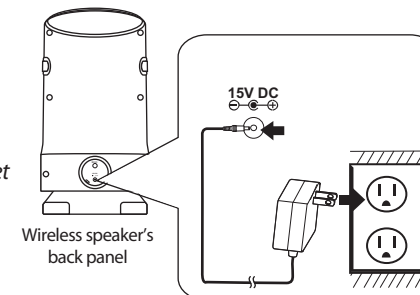


Charge your wireless speaker

Connect the DC adapter to the wireless speaker and plug into an AC power outlet. The CHARGE LED blinks green while it is charging. The light will be solid when charging is complete.

Note: For the first time, charge batteries for 16 hours.

Caution: Only use the supplied power adapter and make sure your outlet matches the AC's input of 100-240V.

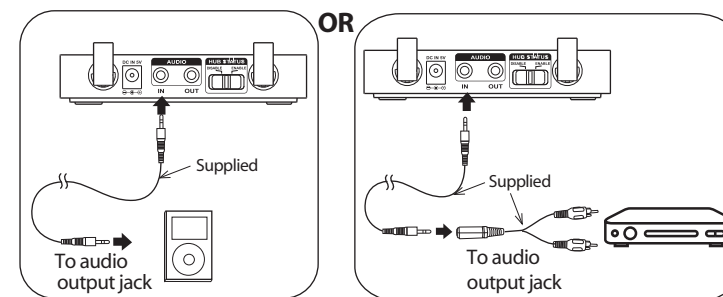


2 Connecting the Transmitter

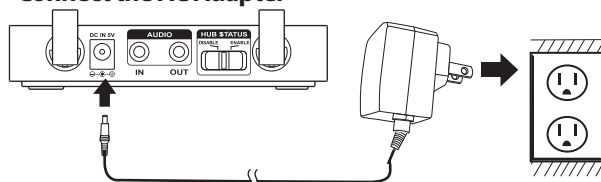
Connect to an audio source

Connect one end of the audio cable (supplied) to the **AUDIO IN** jack on the sender and the other end to the audio output jack of your device (such as an A/V receiver, PC, or iPod.)

Note: If you are adding this sender to an existing network, set the hub switch to **Disable** and follow the instructions under *Establishing Communication* to add the transmitter and speaker to your existing network. Otherwise, leave it on **Enable** as the transmitter and wireless speaker were pre-configured at the factory and you will not need to go through the *Establish Communication* steps. Remember to turn the volume up on the source device to at least 80% of its maximum volume.



Connect the AC Adapter

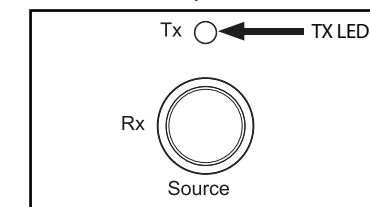


Connect one end of the adapter to the **DC IN** jack, then plug the other end into an AC power outlet. The standby indicator turns red.

Note: Make sure that the power outlet is 100-240V, and do not connect the AC adapter until all other connections are completed.

3 Establishing Communication

If this is your first Rocketboost product and you do not have an existing Rocketboost network, the devices were joined at the factory. You do not need to join them. If you are adding these devices to an existing network, change the hub mode switch on the sender to **Disabled** and then join BOTH devices to your existing hub.



Use this procedure only if you need to rejoin the transmitter and speaker. This procedure is not required for normal operation as devices were joined at the factory. To connect these devices to an existing hub device that you own, follow the same instructions: Join the sender/receiver to your existing hub, then join the wireless speaker to your existing hub. **Note:** You can only join devices to the hub unit (the one with the green LED).

Rocketboost device

- Set the HUB STATUS switch to **ENABLE** if this is your first Rocketboost product set.
 - The LED lights green when the HUB STATUS switch is set to **ENABLE**.
 - The LED lights blue when the HUB STATUS switch is set to **DISABLE**.
- Press and hold the **Power/Join** button on the sender/receiver for more than three seconds to put it into joining mode. The LED starts blinking rapidly and the unit will stay in Join mode for 30 seconds.
- Press the **Power/Join** button on the wireless speaker for more than three seconds so the sender and wireless speaker will enter connection mode.
 - The LED lights steadily if the link is activated between both of the units.
 - The LED blinks at a slower rate if the communication link is not successful.
- Once the link is established, if the Source LED on the wireless speaker is not illuminated, press the **Source** button to toggle to the next source. If the LED is still not illuminated, check that your source is powered up. For further details, see instructions in the user manual for joining new devices to an existing Rocketboost network.

4 Listening to Music

To listen to music:

- Turn on the sender and the wireless speaker. Make sure that the wireless speaker is fully charged (if using Batteries) and there is an active link between the sender and the wireless speaker. An active link will be indicated by the Power LED showing a solid blue.
- Make sure the volume is turned up to about 80% of maximum volume.
- Adjust the volume level on your wireless speaker. If you have multiple streams in your Rocketboost network, press the **Source** button on the wireless speaker to hear the next stream. Repeated pressing of the SOURCE button will toggle through available sources.

ENGLISH 09-0536

QUICK SETUP GUIDE





RF-RBWSO2
SPEAKER



RF-RBWSO2*
SENDER

OUTDOOR

OFFICE

SPEAKER

LIVING ROOM

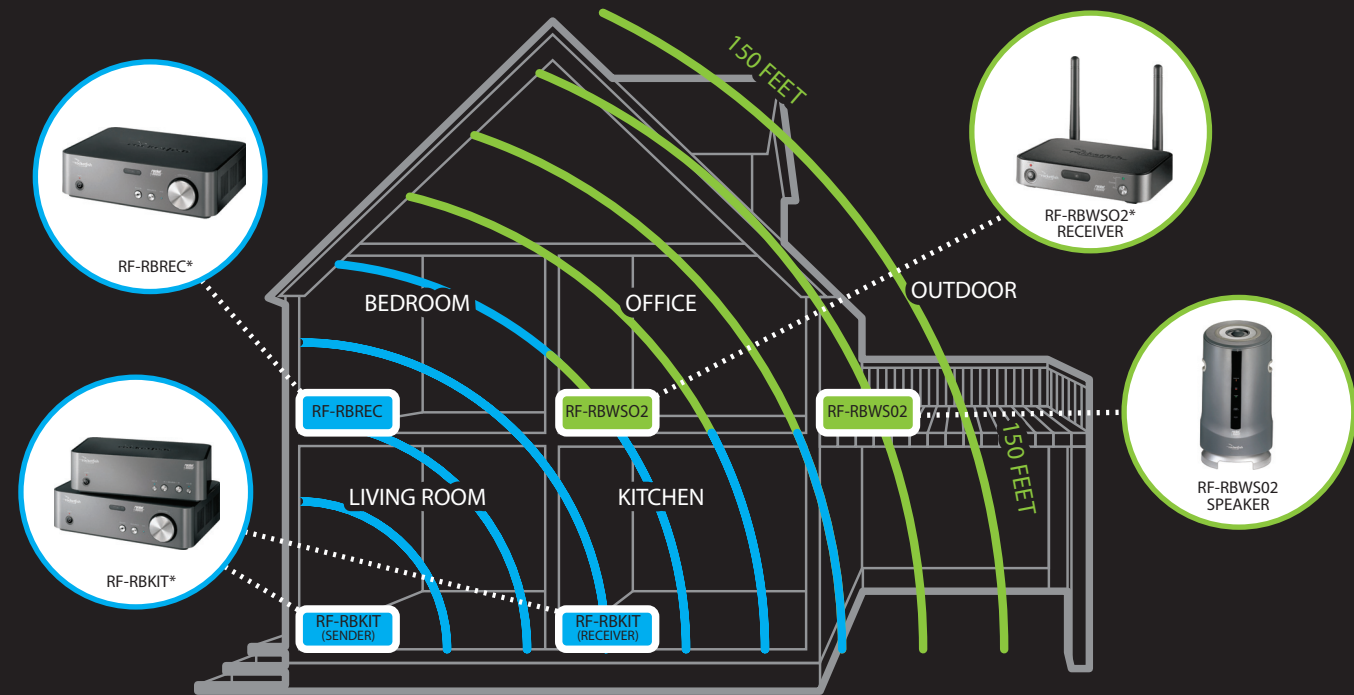
RF-RBWSO2

150 FEET

*Upgrades your existing audio products to wireless

INCLUDED

There is only one Speaker and Sender/Receiver included in the box, however the unit can operate simultaneously as a sender and receiver as depicted in the diagrams.



RF-RBREC*



RF-RBKIT*



RF-RBWSO2*
RECEIVER



RF-RBWSO2
SPEAKER

BEDROOM

OFFICE

OUTDOOR

RF-RBREC

RF-RBWSO2

RF-RBWSO2

LIVING ROOM

KITCHEN

RF-RBKIT (SENDER)

RF-RBKIT (RECEIVER)

150 FEET

*Upgrades your existing audio products to wireless

INCLUDED: CONNECT UP TO 2 ROOMS

NOT INCLUDED: OTHER ROCKETBOOST PRODUCTS (CAN CONNECT UP TO 9 ROOMS WITH ONE SENDER)